

The Drovers Solar Farm

Figure 6.15: PM8, PM12 and PM14 Summer Photomontages - Illustrative Scheme (Part C)

Prepared by: LDA Design

Date: November 2025

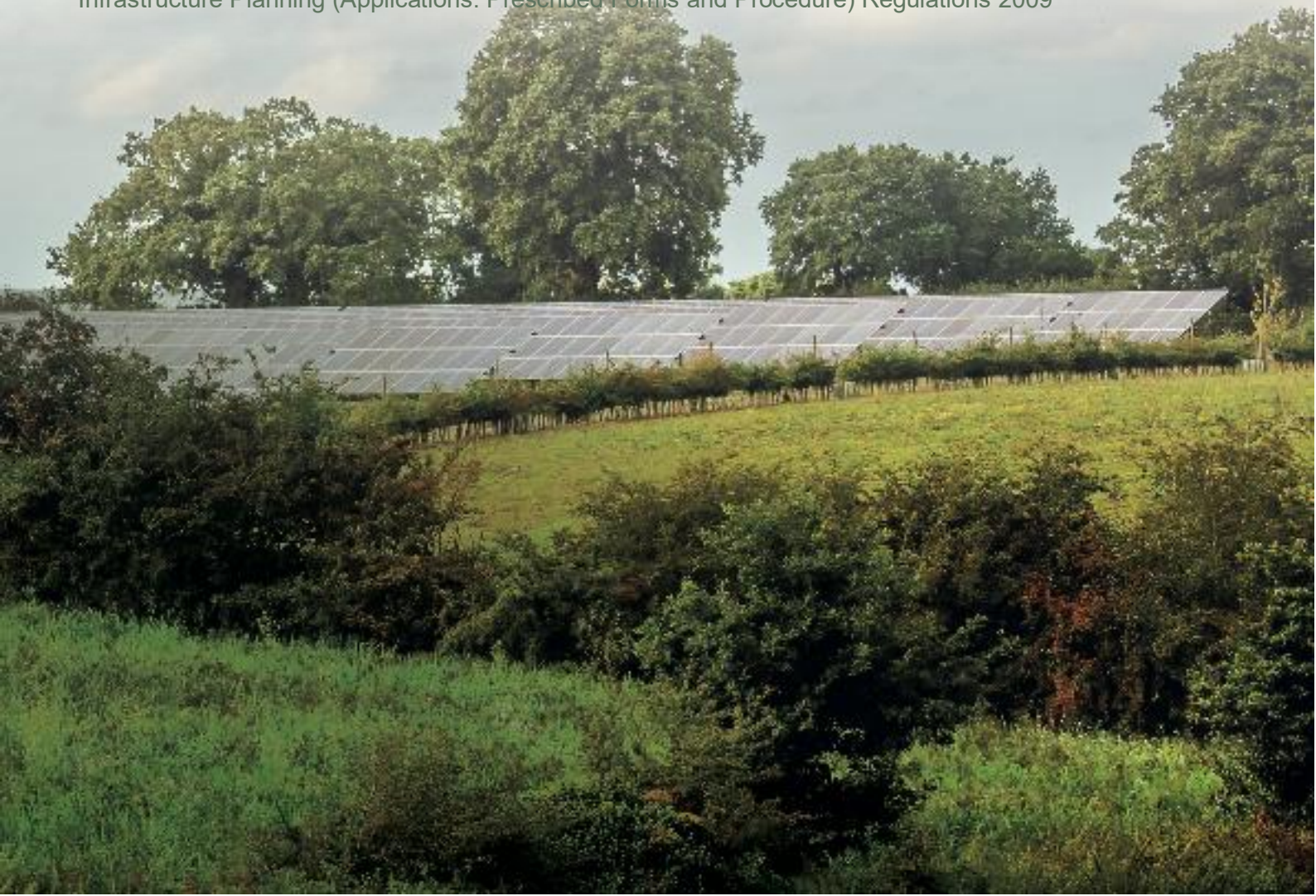
PINS reference: EN0110013

Document reference: APP/6.3 (Original)

APFP Regulation Reg 5(2)(a)

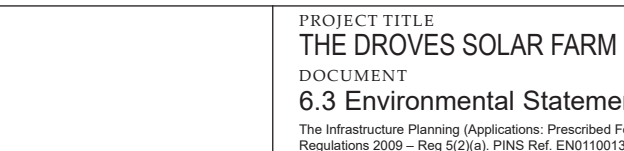
Planning Act 2008

Infrastructure Planning (Applications: Prescribed Forms and Procedure) Regulations 2009





Existing Photograph

LDĀDESIGN	Camera Location (OS Grid Reference):	581909 E 315048 N	Horizontal Field of View:	90° (Cylindrical projection)	Photo Date / Time:	19/06/2025 10:24		COPYRIGHT Ordnance Survey material by permission of Ordnance Survey on behalf of the Controller of Her Majesty's Stationery Office © Crown Copyright. All rights reserved. 2025 Reference number AC0000808122.	PROJECT TITLE	DRAWING TITLE							
	Ground Level (mAOD):	39m	Paper Size:	841mm x 297mm (Half A1)	Camera Model and Sensor Format:	Canon EOS 6D, FFS			THE DROVES SOLAR FARM	ES Figure 6.15 Viewpoint 14 - Castle Acre Castle, Cuckstool Lane, Castle Acre							
	Direction of View: bearing from North (0°):	210°	Enlargement Factor:	96%	Lens Make, Model and Focal Length:	Canon EF50mm f/1.8 STM			DOCUMENT	REVISION	P0, DCO Submission	DRN	JB	CHK	OWh/MB	APP	RP
	Distance to Site:	990m	Visualisation Type:	Type 1 (for context)	Height of Camera Lens above Ground (mAOD):	1.5m			6.3 Environmental Statement Volume 3	DWG NO	9485_0525	DATE	19/11/2025	Sheet 1 of 3			
									The Infrastructure Planning (Applications: Prescribed Forms and Procedure) Regulations 2009 – Reg 5(2)(a), PINS Ref. EN0110013.								




Note 1: Year 1 planting typology heights are shown at the smallest potential heights, as outlined within the oLEMP indicative species planting list i.e 0.6m high for new hedgerow whips, 1.75m high for new specimen trees and new woodland canopy between 0.6-3m high.
Note 2: New tree, hedgerow, scrub and woodland planting has shown at the following assumed growth rates for year 15 visualisations: 300mm per year between year 1 and year 5, 400mm per year from year 6 onwards. These rates have been used as a conservative estimate.
It is acknowledged that growth rates vary depending on a number of factors such as soil quality, climate, water availability, sunlight, species genetics, and competition from other plants. Human management and pests also influence how fast trees grow.
Note 3: All existing hedgerow shown to be managed at a minimum of 3m in height. All new hedgerow shown to be managed up to 3m and maintained at this height thereafter.

Note 4: Note 4: Visualisations take account for growth of gapping up vegetation within hedgerow, as outlined within the advanced planting plan (APP/7.11). Gapping up vegetation planted as minimum 0.6m tall whips and at the above growth rates over an approximate 8 year period (winter 2025 until Q4 of 2033).
Note 5: Visualisations show Solar PV Array rotations at an angle that demonstrates the worst-case scenario i.e Solar PV Arrays at maximum vertical tilt. Solar PV Array development has been modelled at 4.5m high, which assumes all Solar PV Array development as being Single Axis Trackers to demonstrate the worst-case scenario. In reality, the Single Axis Tracker Solar PV Arrays would likely vary in height throughout the day as the sun moves above the Site and the inclination of Single Axis Tracker Solar PV Arrays reduces; therefore being less than 4.5m in height.

Note 6: - These Illustrative Visualisations are an interpretation of the development parameters shown on the Concept Masterplan and based upon the technical information included within Chapter 5: Scheme Description (APP/6.1). The illustrative capacity layout has been slightly amended since the production of these Illustrative Visualisations.
Note 7: The siting and placement of both substations within field 27 takes account of a design solution that presents a reasonable worst-case scenario. The base of the National Grid Substation model has been modelled at 55m AOD. The base of the Customer Substation model has been modelled at 60.75m AOD.

Photomontage - Year 1

LDĀDESIGN	Camera Location (OS Grid Reference): 581909 E 315048 N		Horizontal Field of View: 90° (Cylindrical projection)	Photo Date / Time: 19/06/2025 10:24	This photomontage is based upon LIDAR digital terrain data with spot heights at 1m resampled to 5m (which does not precisely model small scale changes in landform or sharp breaks in slope).		COPYRIGHT Ordnance Survey material by permission of Ordnance Survey on behalf of the Controller of Her Majesty's Stationery Office © Crown Copyright. All rights reserved. 2025 Reference number AC0000808122.	PROJECT TITLE THE DROVES SOLAR FARM DOCUMENT 6.3 Environmental Statement Volume 3 The Infrastructure Planning (Applications: Prescribed Forms and Procedure) Regulations 2009 – Reg 5(2)(a). PINS Ref. EN0110013.	DRAWING TITLE ES Figure 6.15 Viewpoint 14 - Castle Acre Castle, Cuckstool Lane, Castle Acre
	Ground Level (mAOD): 39m	Paper Size: 841mm x 297mm (Half A1)							
	Direction of View: bearing from North (0°): 210°	Enlargement Factor: 96%		Lens Make, Model and Focal Length: Canon EF50mm f/1.8 STM	The three dimensional model of the illustrative scheme is based on drawing ES Appendix 5.1: Illustrative Technical Information [App.6.4].			REVISION P0, DCO Submission	CHK OWh/MB APP RP
	Distance to Site: 990m	Visualisation Type: Type 3		Height of Camera Lens above Ground (mAOD): 1.5m				DWG NO 9485_0525	DATE 19/11/2025 Sheet 2 of 3



Note 1: Year 1 planting typology heights are shown at the smallest potential heights, as outlined within the oLEMP indicative species planting list i.e 0.6m high for new hedgerow whips, 1.75m high for new specimen trees and new woodland canopy between 0.6-3m high.
Note 2: New tree, hedgerow, scrub and woodland planting has shown at the following assumed growth rates for year 15 visualisations: 300mm per year between year 1 and year 5, 400mm per year from year 6 onwards. These rates have been used as a conservative estimate.
It is acknowledged that growth rates vary depending on a number of factors such as soil quality, climate, water availability, sunlight, species genetics, and competition from other plants. Human management and pests also influence how fast trees grow.
Note 3: All existing hedgerow shown to be managed at a minimum of 3m in height. All new hedgerow shown to be managed up to 3m and maintained at this height thereafter.

Note 4: Note 4: Visualisations take account for growth of gapping up vegetation within hedgerow, as outlined within the advanced planting plan (APP/7.11). Gapping up vegetation planted as minimum 0.6m tall whips and at the above growth rates over an approximate 8 year period (winter 2025 until Q4 of 2033).

Note 5: Visualisations show Solar PV Array rotations at an angle that demonstrates the worst-case scenario i.e Solar PV Arrays at maximum vertical tilt. Solar PV Array development has been modelled at 4.5m high, which assumes all Solar PV Array development as being Single Axis Trackers to demonstrate the worst-case scenario. In reality, the Single Axis Tracker Solar PV Arrays would likely vary in height throughout the day as the sun moves above the Site and the inclination of Single Axis Tracker Solar PV Arrays reduces; therefore being less than 4.5m in height.

Note 6: - These Illustrative Visualisations are an interpretation of the development parameters shown on the Concept Masterplan and based upon the technical information included within Chapter 5: Scheme Description (APP/6.1). The illustrative capacity layout has been slightly amended since the production of these Illustrative Visualisations.

Note 7: The siting and placement of both substations within field 27 takes account of a design solution that presents a reasonable worst-case scenario. The base of the National Grid Substation model has been modelled at 55m AOD. The base of the Customer Substation model has been modelled at 60.75m AOD.

Photomontage - Year 15

<div>LDĀDESIGN</div>		Camera Location (OS Grid Reference): Ground Level (mAOD): Direction of View: bearing from North (0°): Distance to Site:	581909 E 315048 N 39m 210° 990m	Horizontal Field of View: Paper Size: Enlargement Factor: Visualisation Type:	90° (Cylindrical projection) 841mm x 297mm (Half A1) 96% Type 3	Photo Date / Time: Camera Model and Sensor Format: Lens Make, Model and Focal Length: Height of Camera Lens above Ground (mAOD):	19/06/2025 10:24 Canon EOS 6D, FFS Canon EF50mm f/1.8 STM 1.5m	This photomontage is based upon LIDAR digital terrain data with spot heights at 1m resampled to 5m (which does not precisely model small scale changes in landform or sharp breaks in slope). The three dimensional model of the illustrative scheme is based on drawing ES Appendix 5.1: Illustrative Technical Information [App.6.4].		<div>COPYRIGHT Ordnance Survey material by permission of Ordnance Survey on behalf of the Controller of Her Majesty's Stationary Office © Crown Copyright. All rights reserved. 2025 Reference number AC0000808122.</div>	<div>PROJECT TITLE THE DROVES SOLAR FARM DOCUMENT 6.3 Environmental Statement Volume 3 <small>The Infrastructure Planning (Applications: Prescribed Forms and Procedure) Regulations 2009 – Reg 5(2)(a). PINS Ref. EN0110013.</small></div>	<div>DRAWING TITLE ES Figure 6.15 Viewpoint 14 - Castle Acre Castle, Cuckstool Lane, Castle Acre REVISION P0, DCO Submission DRN JB CHK OWh/MB APP RP DWG NO 9485_0525 DATE 19/11/2025 Sheet 3 of 3</div>
----------------------	--	--	--	--	--	---	---	--	--	---	---	---



THE DROVES
SOLAR FARM